

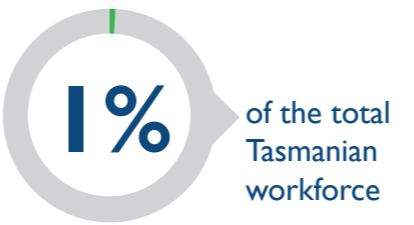
ELECTRICITY, GAS, WATER AND WASTE SERVICES

INDUSTRY SNAPSHOT 2019

THE WORKFORCE

This industry covers a wide range of activities, separated into eight groups

- Electricity Generation
- Electricity Transmission
- Electricity Distribution
- On Selling Electricity and Electricity Market Operation
- Gas Supply
- Water Supply, Sewerage and Drainage Services
- Waste Collection Services
- Waste Treatment, Disposal and Remediation Services



Water Supply, Sewerage and Drainage Services is the largest employing group

39% of workers aged 45-54



THE INJURIES

136 injuries across the industry in 2019



23% of injuries over the last ten years resulted in at least one week off work

3.7 serious injuries per million hours worked
59% lower than the state average of **9.1**

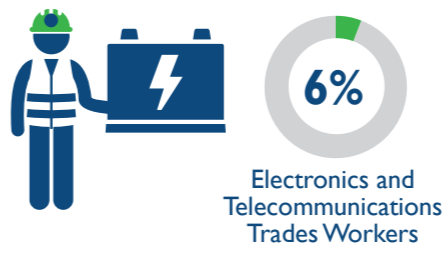
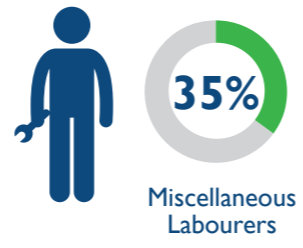
8% increase in serious injury frequency rate over the last ten years

THE PEOPLE

Waste Treatment, Disposal and Remediation Services had the highest serious injury frequency rate

Water Supply, Sewerage and Drainage Services reported 43% of all serious injuries

Occupations with the highest percentage of serious injuries



Workers aged over 55 report a higher serious injury frequency rate than other age brackets

THE CAUSES

The most common causes of injury across the industry



ACTION AREAS

Priority conditions and causes identified in the WorkSafe Strategic Plan 2018-2023 relevant to the industry



For more information contact
 Phone: 1300 366 322 (within Tasmania)
 (03) 6166 4600 (outside Tasmania)
 Fax: (03) 6173 0206
 Email: wstinfo@justice.tas.gov.au
 Web: www.worksafe.tas.gov.au

Published June 2020
 DISCLAIMER: The information provided herein was believed correct at the time of publication. The information is made available for general information only and should not be taken as a substitute for professional advice.