

CONSTRUCTION

INDUSTRY SNAPSHOT 2019

THE WORKFORCE

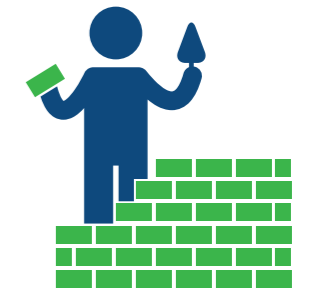
This industry covers a wide range of activities, separated into eight groups



- Residential Building Construction
- Non-Residential Building Construction
- Heavy and Civil Engineering Construction
- Other Construction Services
- Land Development and Site Preparation Services
- Building Structure Services
- Building Installation Services
- Building Completion Services



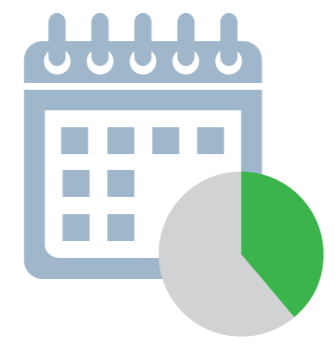
Building Installation Services is the largest employing group



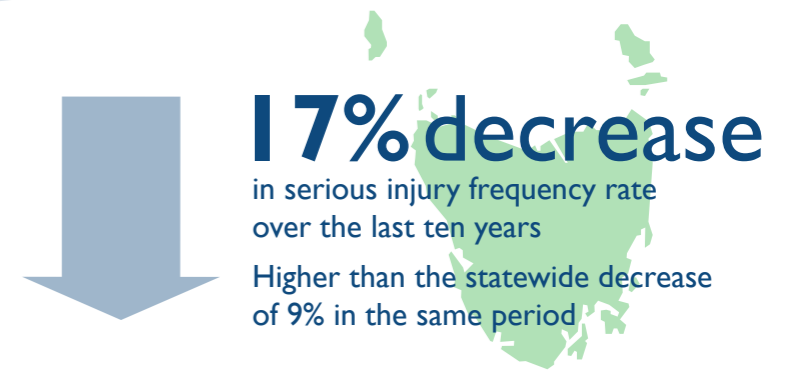
Half the industry is under 35 years old

THE INJURIES

827 injuries across the industry in 2019



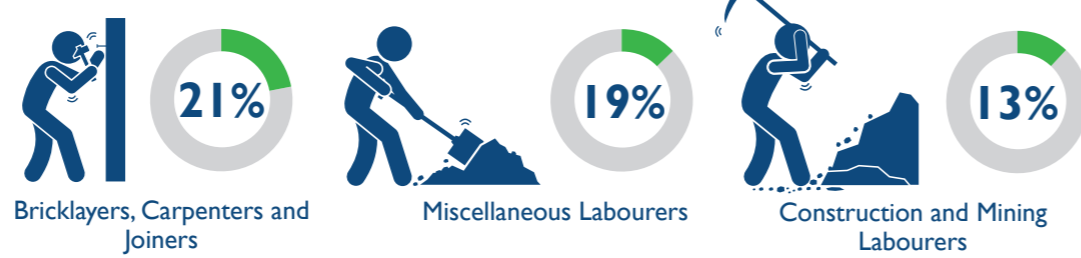
13.2 serious injuries per million hours worked
SECOND HIGHEST OF ALL INDUSTRIES
45% higher than the state average of 9.1



THE PEOPLE

Workers aged 55-64 had the highest serious injury frequency rate

Occupations with the highest percentage of serious injuries



Residential Building Construction reported the highest number of injuries

Non-Residential Construction had the highest serious injury frequency rate with 36 serious injuries per million hours worked

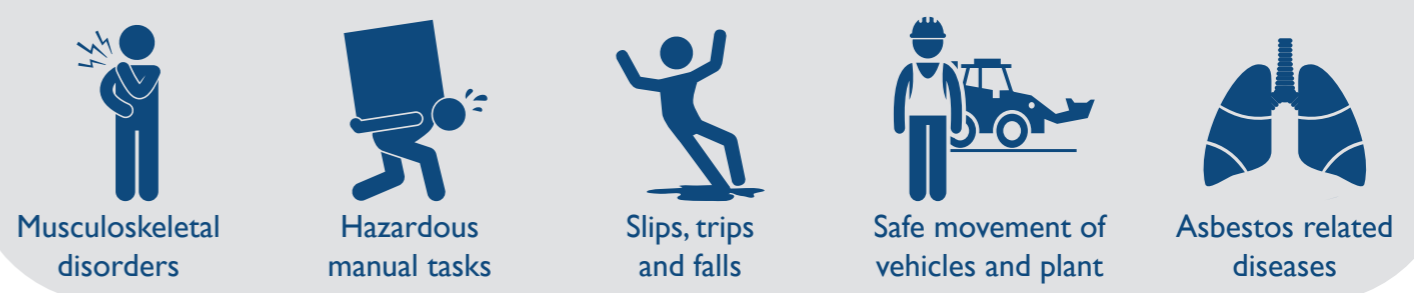
THE CAUSES

The most common causes of injury across the industry



ACTION AREAS

Priority conditions and causes identified in the WorkSafe Strategic Plan 2018-2023 relevant to the industry



For more information contact
Phone: 1300 366 322 (within Tasmania)
(03) 6166 4600 (outside Tasmania)
Fax: (03) 6173 0206
Email: wstinfo@justice.tas.gov.au
Web: www.worksafe.tas.gov.au

Published June 2020
DISCLAIMER: The information provided herein was believed correct at the time of publication. The information is made available for general information only and should not be taken as a substitute for professional advice.