

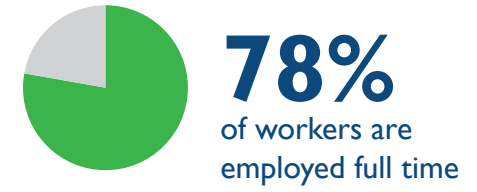
# MANUFACTURING

## INDUSTRY SNAPSHOT 2019

### THE WORKFORCE

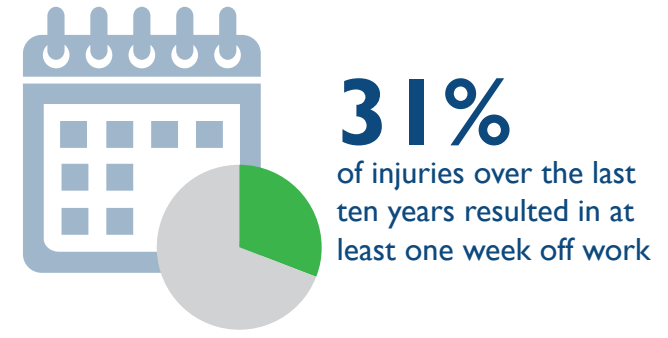
This industry covers a wide range of activities, separated into over 60 groups. The eight largest groups in Tasmania are:

- Bakery Product Manufacturing
- Meat and Meat Product Manufacturing
- Basic Non-ferrous Metal Manufacturing
- Dairy Product Manufacturing
- Other Transport Equipment Manufacturing
- Beverage Manufacturing
- Furniture Manufacturing
- Structural Metal Product Manufacturing

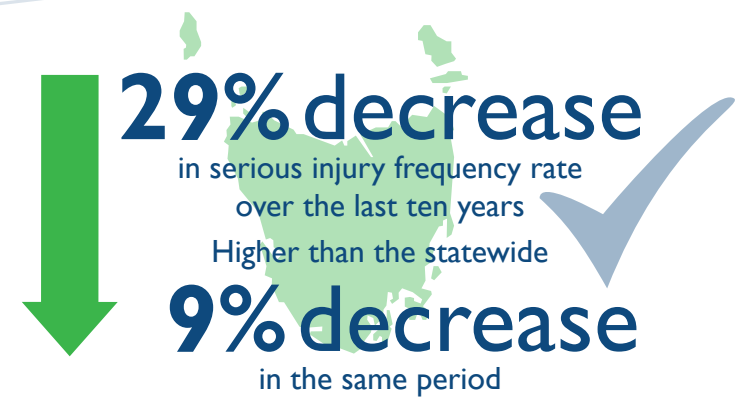


### THE INJURIES

**847**  
injuries across the industry in 2019



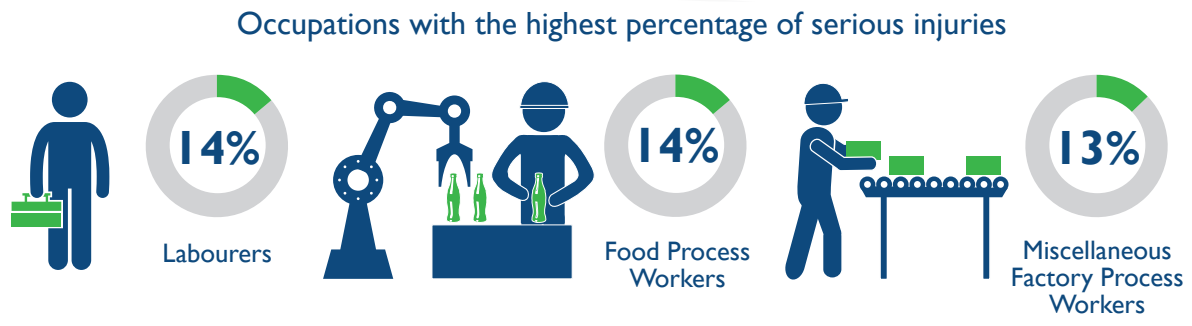
**9.6** serious injuries per million hours worked  
**5%** higher than the state average of **9.1**



### THE PEOPLE

Meat and Meat Product Manufacturing reported the highest number of injuries

Structural Metal Product Manufacturing has one of the highest serious injury frequency rates



**55-64** year olds had the highest serious injury frequency rate

### THE CAUSES

The most common causes of injury across the industry

- Body stressing
- Falls, slips and trips
- Being hit by moving objects
- Hitting objects with a part of the body

### ACTION AREAS

Priority conditions and causes identified in the WorkSafe Strategic Plan 2018-2023 relevant to the industry

- Musculoskeletal disorders
- Hazardous manual tasks
- Slips, trips and falls
- Safe movement of vehicles and plant



For more information contact  
Phone: 1300 366 322 (within Tasmania)  
(03) 6166 4600 (outside Tasmania)  
Fax: (03) 6173 0206  
Email: wstinfo@justice.tas.gov.au  
Web: www.worksafe.tas.gov.au

Published June 2020  
DISCLAIMER: The information provided herein was believed correct at the time of publication. The information is made available for general information only and should not be taken as a substitute for professional advice.