

# ACCOMMODATION AND FOOD SERVICES

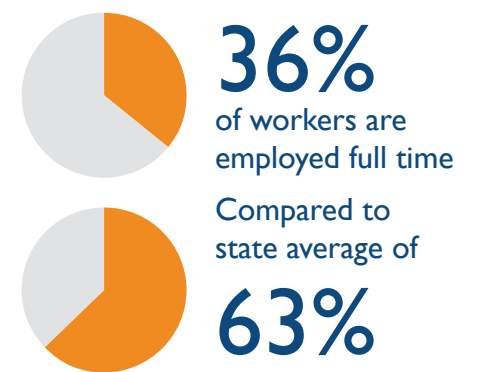
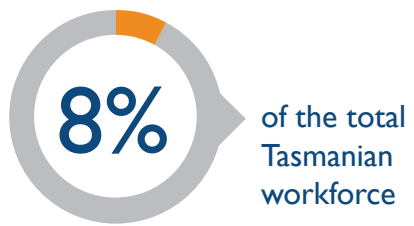
## INDUSTRY SNAPSHOT 2018

### THE WORKFORCE

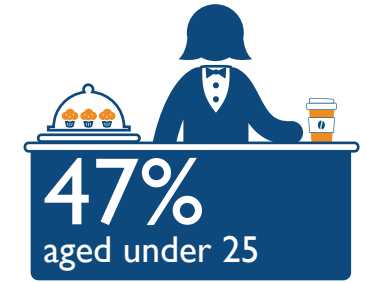
This industry covers a wide range of activities, separated into four groups



- Cafes, Restaurants and Takeaway Food Services
- Accommodation
- Pubs, Taverns and Bars
- Clubs (Hospitality)



Over half are employed in Cafes, Restaurants and Takeaway Food Services



### THE INJURIES

295 injuries across the industry in 2018



7 serious injuries per million hours worked  
19% lower than the state average of 8.7

Serious injury frequency rate has increased by 13% over the last ten years but remains below the state average each year

### THE PEOPLE

45-54 year olds reported the highest serious injury frequency rate



Cafes, Restaurants and Takeaway Food Services accounted for the highest proportion of injuries

Accommodation reported the highest serious injury frequency rate



#### Occupations with the Highest Percentage of Serious Injuries



Cleaners and Laundry Workers: 21%  
Hospitality Workers: 21%  
Food Trades Workers: 19%

### THE CAUSES

The most common causes of injury across the industry



Body stressing, Falls, slips and trips, Being hit by moving objects, Mental stress

### ACTION AREAS

Priority conditions and causes identified in the WorkSafe Strategic Plan 2018-2023 relevant to the industry



Musculoskeletal disorders, Hazardous manual tasks, Slips, trips and falls, Mental health conditions



For more information contact  
Phone: 1300 366 322 (within Tasmania)  
(03) 6166 4600 (outside Tasmania)  
Fax: (03) 6173 0206  
Email: wstinfo@justice.tas.gov.au  
Web: www.worksafe.tas.gov.au

Published August 2019  
DISCLAIMER: The information provided herein was believed correct at the time of publication. The information is made available for general information only and should not be taken as a substitute for professional advice.