

ACCOMMODATION AND FOOD SERVICES

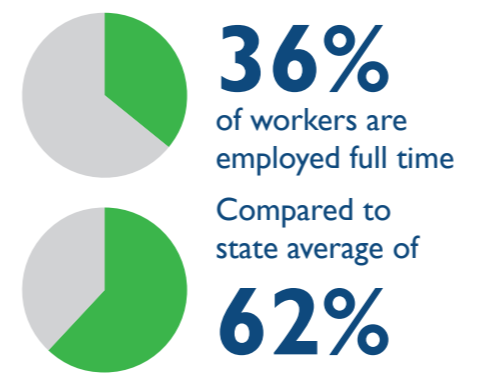
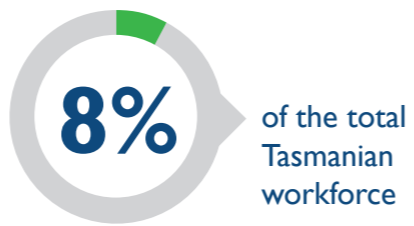
INDUSTRY SNAPSHOT 2019

THE WORKFORCE

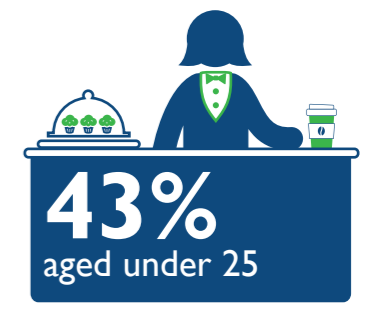
This industry covers a wide range of activities, separated into four groups



- Cafes, Restaurants and Takeaway Food Services
- Accommodation
- Pubs, Taverns and Bars
- Clubs (Hospitality)

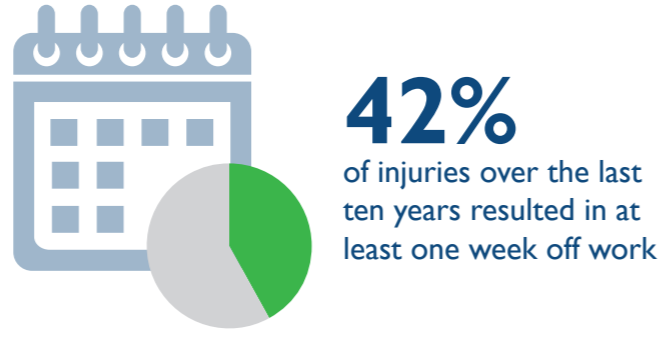


Over half are employed in Cafes, Restaurants and Takeaway Food Services

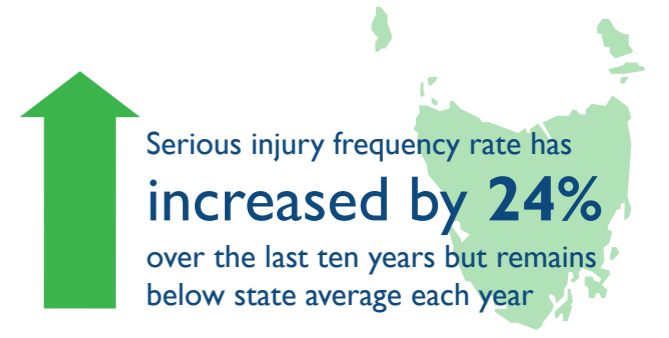


THE INJURIES

333 injuries across the industry in 2019



7 serious injuries per million hours worked
23% lower than the state average of **9.1**



THE PEOPLE

45-54 year olds reported the highest serious injury frequency rate



Cafes, Restaurants and Takeaway Food Services accounted for the highest proportion of injuries



Accommodation reported the highest serious injury frequency rate

Occupations with the highest percentage of serious injuries



THE CAUSES

The most common causes of injury across the industry



- Body stressing
- Falls, slips and trips
- Being hit by moving objects
- Hitting objects with a part of the body

ACTION AREAS

Priority conditions and causes identified in the WorkSafe Strategic Plan 2018-2023 relevant to the industry



- Musculoskeletal disorders
- Hazardous manual tasks
- Slips, trips and falls
- Safe movement of vehicles and plant



For more information contact
Phone: 1300 366 322 (within Tasmania)
(03) 6166 4600 (outside Tasmania)
Fax: (03) 6173 0206
Email: wstinfo@justice.tas.gov.au
Web: www.worksafe.tas.gov.au

Published June 2020
DISCLAIMER: The information provided herein was believed correct at the time of publication. The information is made available for general information only and should not be taken as a substitute for professional advice.