

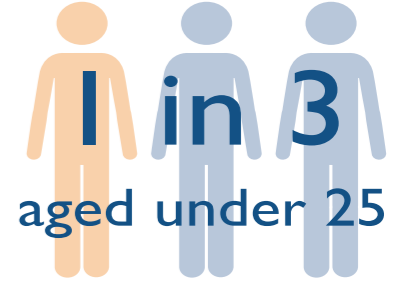
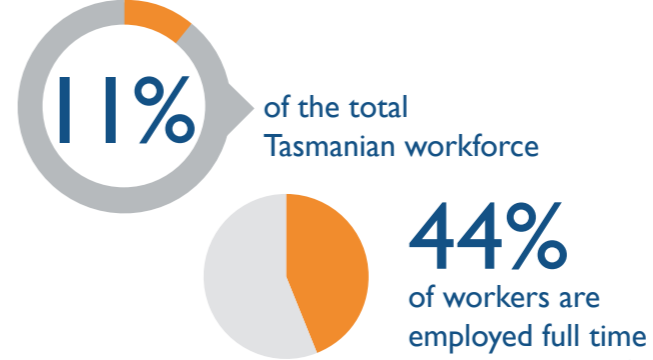
RETAIL TRADE

INDUSTRY SNAPSHOT 2018

THE WORKFORCE

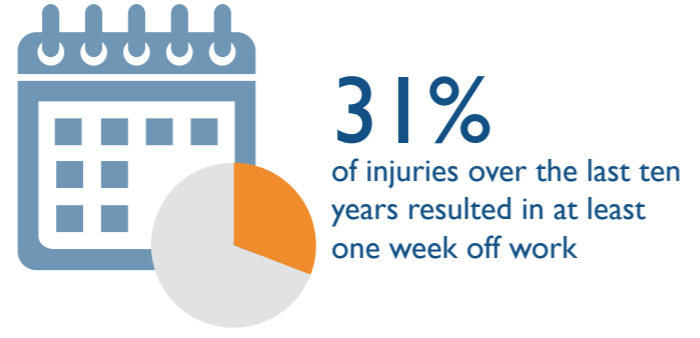
This industry covers a wide range of activities, separated into 14 groups

- Motor Vehicle Retailing
- Motor Vehicle Parts and Tyre Retailing
- Fuel Retailing
- Supermarket and Grocery Stores
- Specialised Food Retailing
- Furniture, Floor Coverings, Houseware and Textile Goods Retailing
- Electrical and Electronic Goods Retailing
- Hardware, Building and Garden Supplies Retailing
- Recreational Goods Retailing
- Clothing, Footwear and Personal Accessory Retailing
- Department Stores
- Pharmaceutical and Other Store-Based Retailing
- Non-Store Retailing
- Retail Commission-Based Buying and/or Selling



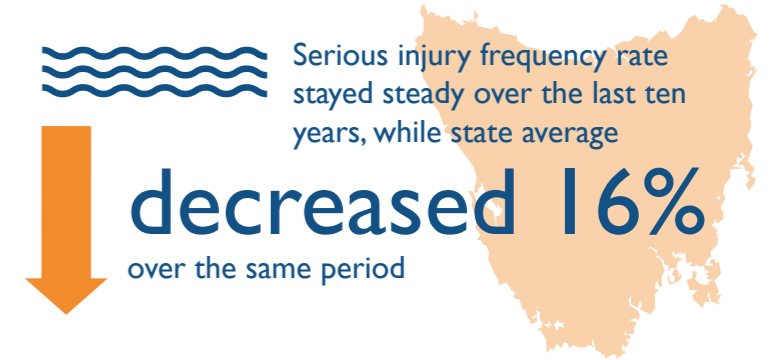
THE INJURIES

567 injuries across the industry group in 2018



6.6 serious injuries per million hours worked

24% lower than the state average of 8.7



THE PEOPLE

45-54 year olds report the highest serious injury frequency rates

Motor Vehicle Parts and Tyre Retail had the highest serious injury frequency rate despite a low number of claims

30% of serious injuries occurred in Supermarket and Grocery Stores



THE CAUSES

The most common causes of injury across the industry

- Body stressing
- Falls, slips and trips
- Being hit by moving objects
- Mental stress

ACTION AREAS

Priority conditions and causes identified in the WorkSafe Strategic Plan 2018-2023 relevant to the industry

- Musculoskeletal disorders
- Hazardous manual tasks
- Slips, trips and falls
- Mental health conditions



For more information contact
 Phone: 1300 366 322 (within Tasmania)
 (03) 6166 4600 (outside Tasmania)
 Fax: (03) 6173 0206
 Email: wstinfo@justice.tas.gov.au
 Web: www.worksafe.tas.gov.au

Published August 2019
 DISCLAIMER: The information provided herein was believed correct at the time of publication.
 The information is made available for general information only and should not be taken as a substitute for professional advice.