

INDUSTRY PERFORMANCE 2018

STATEWIDE SNAPSHOT

THE WORKFORCE

Industries divided into 19 divisions:

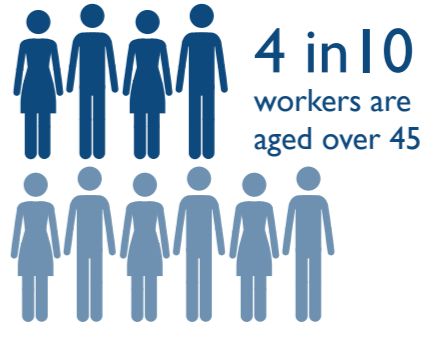
Accommodation and Food Services.....8%	Manufacturing.....7%
Administrative and Support Services.....3%	Mining.....2%
Agriculture, Forestry and Fishing.....5%	Other Services.....4%
Arts and Recreation Services.....3%	Professional, Scientific and Technical Services.....5%
Construction.....9%	Public Administration and Safety.....7%
Education and Training.....8%	Rental, Hiring and Real Estate Services.....2%
Electricity, Gas, Water and Waste Services.....2%	Retail Trade.....11%
Financial and Insurance Services.....2%	Transport, Postal and Warehousing.....5%
Health Care and Social Assistance.....15%	Wholesale Trade.....2%
Information Media and Telecommunications.....1%	

Statewide

hours worked have increased in recent years

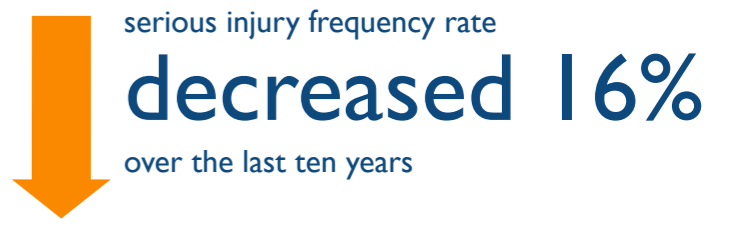
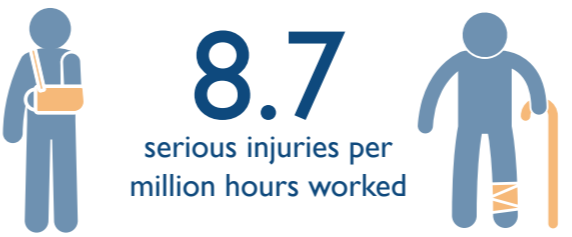
Rental, Hiring and Real Estate is the industry with the largest increase in hours

Agriculture, Forestry and Fishing has seen the largest decrease in hours worked



15% of Tasmanian workers are employed in **Health Care and Social Assistance** making it the largest employing industry in the state

THE INJURIES



THE PEOPLE

55-64 year olds reported the highest serious injury frequency rate of all age groups

Mining industry division has reported the biggest decrease in serious injury frequency rate in ten years

Accommodation and Food Services industry division reported the biggest increase in serious injury frequency rate in the last ten years

Occupations with the highest percentage of serious injuries



1 in 5 workers injured in 2018 worked in **Health Care and Social Assistance**

THE CAUSES

The most common causes of injury across the state



ACTION AREAS

Priority conditions and causes identified in the WorkSafe Strategic Plan 2018-2023



For more information contact
Phone: 1300 366 322 (within Tasmania)
(03) 6166 4600 (outside Tasmania)
Fax: (03) 6173 0206
Email: wstinfo@justice.tas.gov.au
Web: www.worksafe.tas.gov.au

Published August 2019
DISCLAIMER: The information provided herein was believed correct at the time of publication.
The information is made available for general information only and should not be taken as a substitute for professional advice.