

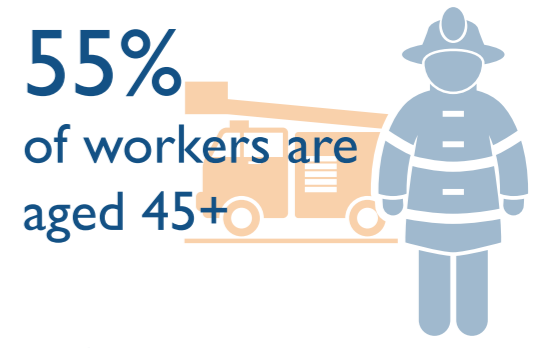
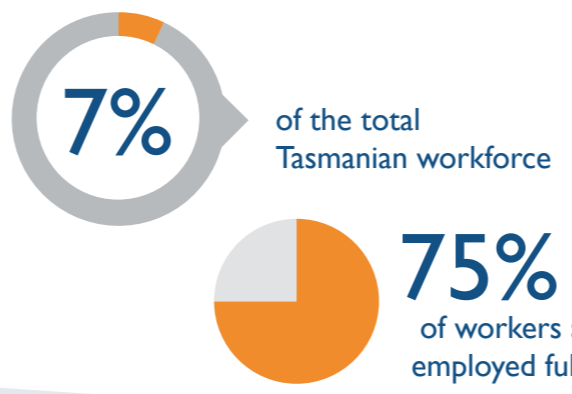
PUBLIC ADMINISTRATION AND SAFETY

INDUSTRY SNAPSHOT 2018

THE WORKFORCE

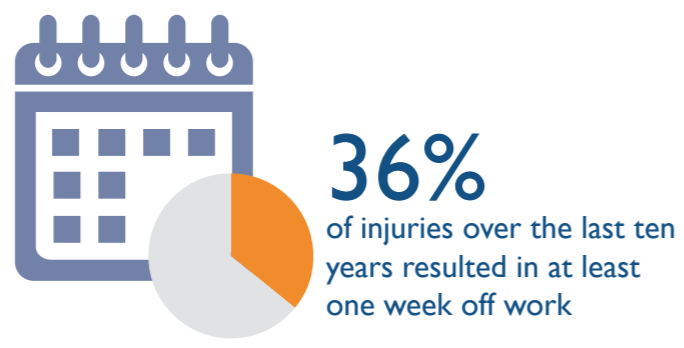
This industry covers a wide range of activities, separated into eight groups

- Government Representation
- Regulatory Services
- Defence
- State Government Administration
- Local Government Administration
- Central Government Administration
- Public Order and Safety Services
- Justice



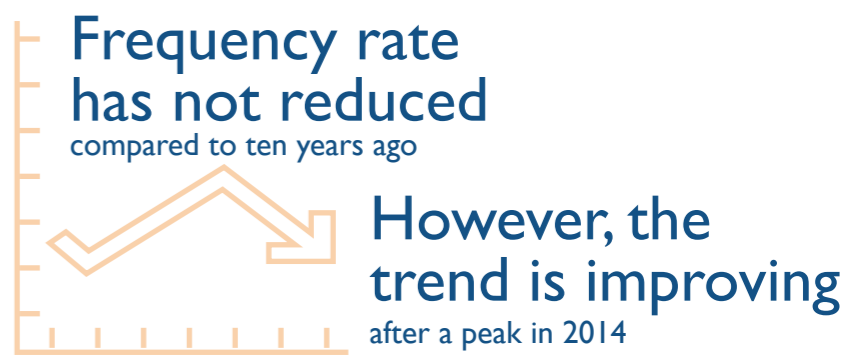
THE INJURIES

793 injuries across the industry in 2018



13.5 serious injuries per million hours worked

55% higher than the state average of 8.7



THE PEOPLE

55-64 year olds reported the highest serious injury frequency rate

Local Government Administration had the highest serious injury frequency rate

Occupations with the highest percentage of serious injuries



THE CAUSES

The most common causes of injury across the industry

Body stressing

Falls, slips and trips

Being hit by moving objects

Mental stress

ACTION AREAS

Priority conditions and causes identified in the WorkSafe Strategic Plan 2018-2023 relevant to the industry

Musculoskeletal disorders

Hazardous manual tasks

Safe movement of vehicles and plant

Mental health conditions

Slips, trips and falls



For more information contact
 Phone: 1300 366 322 (within Tasmania)
 (03) 6166 4600 (outside Tasmania)
 Fax: (03) 6173 0206
 Email: wstinfo@justice.tas.gov.au
 Web: www.worksafe.tas.gov.au

Published August 2019
 DISCLAIMER: The information provided herein was believed correct at the time of publication. The information is made available for general information only and should not be taken as a substitute for professional advice.